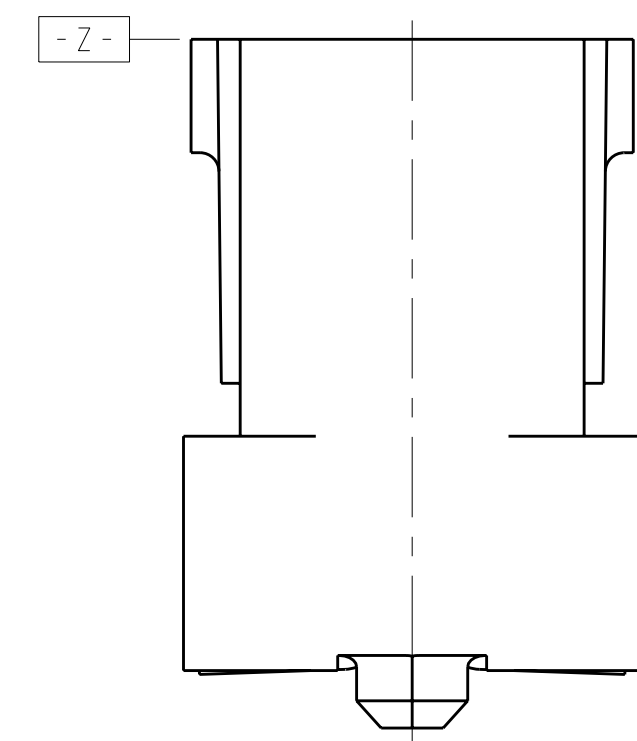
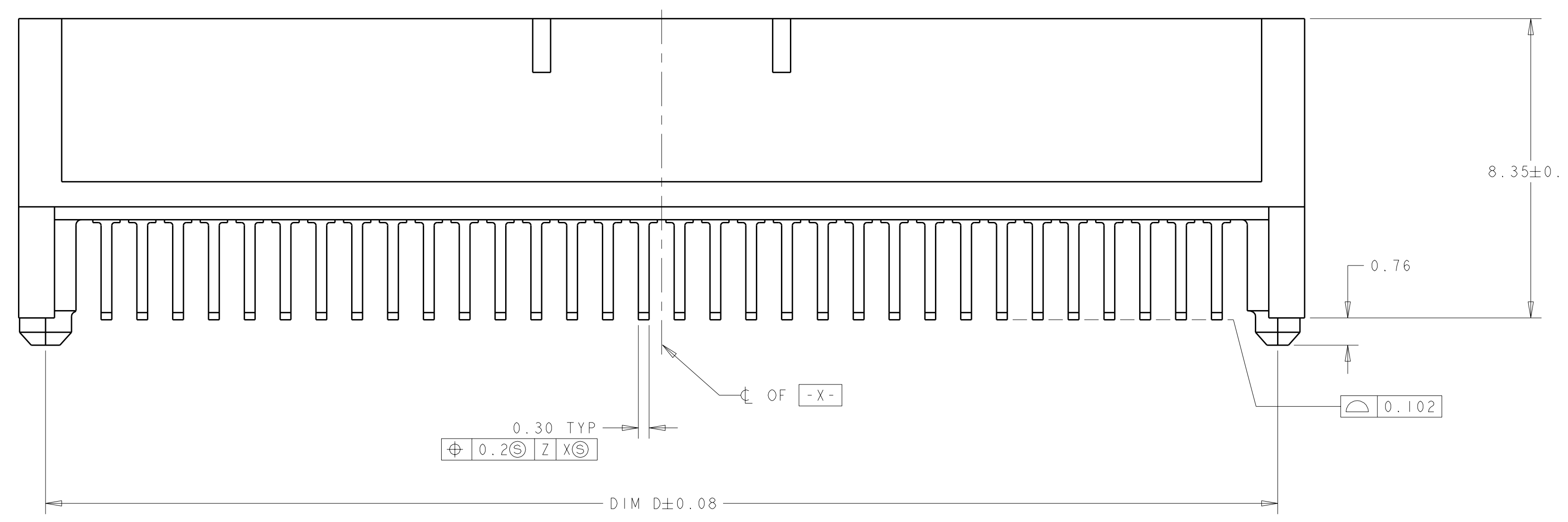
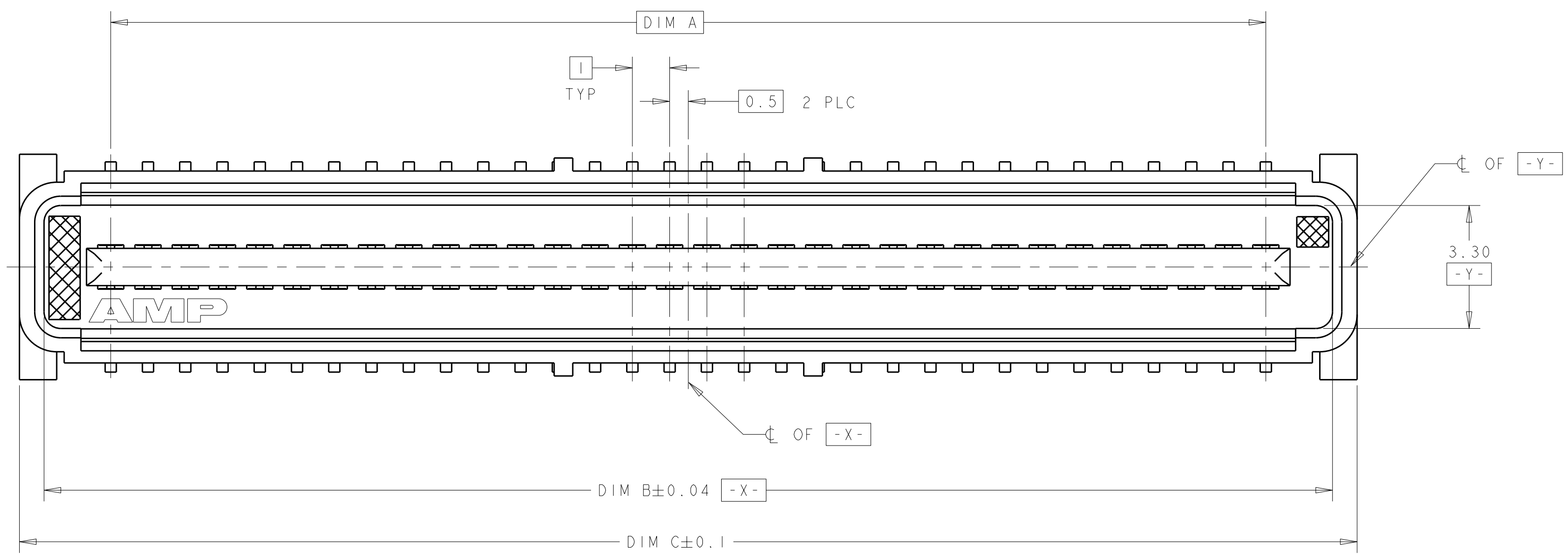
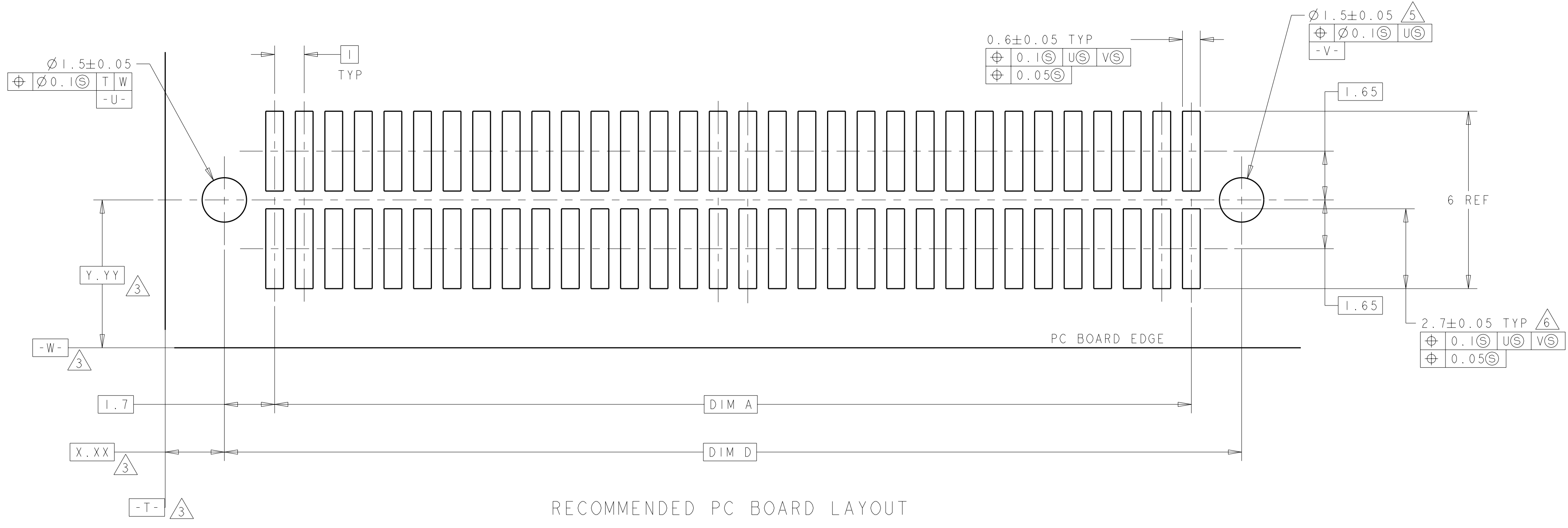


LOC	DIST	REV	DATE	BY	CHK	APPD
AD	39	D	04FEB2004	RWS	RHW	
		E	10JUL2006	DH	DB	



- 1 HOUSING MATERIAL: LIQUID CRYSTAL POLYMER. COLOR; BLACK. CONTACT MATERIAL: PHOSPHOR BRONZE.
- 2 CONTACT FINISH: NICKEL UNDERPLATE ALL OVER, MATING SURFACES PLATED TO MEET PLI PERFORMANCE REQUIREMENTS OF INDUSTRY SPECIFICATION EIA-700AAAB, SOLDER TAILS PLATED TIN-LEAD.
- 3 DATUM LOCATIONS AND BASIC DIMENSIONS TO BE ESTABLISHED BY THE CUSTOMER. CONSULT AMP ENGINEERING WHEN PLACING MULTIPLE CONNECTORS ON A PC BOARD.
- 4 PACKAGED IN TAPE ON REELS PER EIA-841.
- 5 1.5±0.05 DIAMETER HOLE SHOULD BE USED IF PLACED ON PCB WITH VACUUM PLACEMENT EQUIPMENT.
- 6 SHORTER SOLDER LANDS MAY BE USED PER EIA 700AAAB, HOWEVER 2.7 LENGTH ASSURES OPTIMUM SOLDER FILLET.
- 7 CONTACT FINISH: 0.00381 MINIMUM MATTE TIN-LEAD (93-7) ON SOLDER AREA, 0.00127 MINIMUM GOLD ON MATING AREA, BOTH OVER 0.00127 MINIMUM NICKEL ON ENTIRE CONTACT.



RECOMMENDED PC BOARD LAYOUT

FINISH	DIM D	DIM C	DIM B	DIM A	MATING CONNECTOR	STACK HGTS	POS	PART NO
7	44.4	45.9	44.58	41	120524-2	15	84	1-120527-2
7	44.4	45.9	44.58	41	120523-2	13	84	1-120527-2
7	44.4	45.9	44.58	41	120603-2	12	84	1-120527-2
7	44.4	45.9	44.58	41	120521-2	10	84	1-120527-2
7	34.4	35.9	34.58	31	120524-1	15	64	1-120527-1
7	34.4	35.9	34.58	31	120523-1	13	64	1-120527-1
7	34.4	35.9	34.58	31	120603-1	12	64	1-120527-1
7	34.4	35.9	34.58	31	120521-1	10	64	1-120527-1
2	44.4	45.9	44.58	41	120524-2	15	84	120527-2
2	44.4	45.9	44.58	41	120523-2	13	84	120527-2
2	44.4	45.9	44.58	41	120603-2	12	84	120527-2
2	44.4	45.9	44.58	41	120521-2	10	84	120527-2
2	34.4	35.9	34.58	31	120524-1	15	64	120527-1
2	34.4	35.9	34.58	31	120523-1	13	64	120527-1
2	34.4	35.9	34.58	31	120603-1	12	64	120527-1
2	34.4	35.9	34.58	31	120521-1	10	64	120527-1

<small>THIS DRAWING IS A CONTROLLED DOCUMENT FOR AMP INCORPORATED. ALL DIMENSIONS ARE SHOWN AND THE CONTROLLING ORGANIZATION SHOULD BE CONTACTED FOR THE LATEST REVISION.</small>		DWN: J. REED 27/11/97 CHK: L. VO 27/11/97 APPD:	AMP Tyco Electronics Harrisburg, PA 17105-3608
DIMENSIONS: mm TOLERANCES UNLESS OTHERWISE SPECIFIED: 0 PLC ± 1 PLC ±0.03 2 PLC ±0.03 3 PLC ±0.03 4 PLC ± ANGLES ±0°30'	PRODUCT SPEC: 502-1079 APPLICATION SPEC: 114-25045 WEIGHT:	NAME: PLUG ASSY, 1.0mm FH(IEEE 1386) & DWG_TITLE_2 CONNECTOR SIZE: A1 CAGE CODE: 00779 DRAWING NO: C=120527	SCALE: 10:1 SHEET: 1 OF 1 REV: F
MATERIAL: SEE TABLE FINISH:		CUSTOMER DRAWING	